



Sonar North America Championships
Lunenburg Yacht Club Nova Scotia Canada



SAILING INSTRUCTIONS

1. RULES

- 1.1 The regatta will be governed by the rules as defined in *The Racing Rules of Sailing* (RRS).
- 1.2 Only the prescriptions of US Sailing to *The Racing Rules of Sailing* listed in Attachment A will apply.
- 1.3 The Sonar Class Association Constitution, By-Laws, Class Rules and Rules Governing the Sonar Class World Championship (collectively, SCA Rules) will apply.

2. NOTICES TO COMPETITORS

- 2.1 Notices to competitors will be posted on the official notice board located on the LYC Portable Notice Board.
- 2.2 Any questions concerning these sailing instructions, scoring, or any other racing issues shall be submitted in writing to the Race Committee (RC). All written inquiries and responses will be posted on the official notice board.

3. CHANGES TO SAILING INSTRUCTIONS

- 3.1 Any change to the sailing instructions will be posted before 0830 on the day it will take effect, except that any change to the schedule of races will be posted by 2000 on the day before it will take effect.
- 3.2 Oral changes to the sailing instructions given on the water will be communicated on VHF (channel 72) within 10 minutes of the warning signal of any race.

4. SIGNALS MADE ASHORE

- 4.1 Signals made ashore will be displayed on the main flagpole at the LYC, located on the southeast corner of the property.
- 4.2 When flag AP is displayed ashore, '1 minute' is replaced with 'not less than 45 minutes'. This changes race signals.
- 4.3 Flag B hoisted with one sound signal means "Protest time has begun". When lowered with one sound signal it means "Protest time has ended".
- 4.4 When flag Y is displayed ashore, rule 40 applies at all times while afloat. This changes the Part 4 preamble.



5. SCHEDULE OF RACES

5.1 It is the intent of the Race Committee to run as many races as practical on each race day, up to a maximum of four (4) per day, with a maximum total of twelve (12) races for the series.

5.2

Friday, August 08

1000

After Practice Race

Practice Race Warning Signal

First Race Warning Signal

Saturday August 09

1000

First Warning Signal

Sunday August 10

1000

First Warning Signal-No warning signal after 16:00

6. FLAGS, EVENT BOW STICKERS, BOW NUMBERS

6.1 The class flag shall be the Sonar Class flag. Competing boats are not required to display the class flag.

7. RACING AREA

The center of the racing area will be on the waters of Mahone Bay bounded by Bachmans, Rafuse Big Tancook islands and Second Peninsula.. Lunenburg Yacht Club is located at approx. 44 degrees 24.2629 N and 64 degrees 19.220 West. See Chart 4381

8. CHECK IN AND CHECK OUT

8.1 Boats shall check in with the race committee signal boat before their first start of the day.

8.2 Boats that retire during a race or leave the racing area between races shall check out with the race committee either by hail or on VHF (72).

9. COURSES

9.1 The courses will be a windward leeward configuration as shown in Illustration A – Courses.

9.1.1 Course 4: Start – 1 – 1a – Gate (2P/2S) – 1 – 1a – Finish (downwind)

9.1.2 Course 5: Start – 1 – 1a – Gate (2P/2S) – 1 – 1a – Gate (2P/2S) – Finish (upwind)

9.2 The course to be sailed (4 or 5), approximate compass bearing and approximate distance from the signal boat to the windward mark will be displayed on the signal boat and broadcast on VHF (72) before the warning signal. Failure to broadcast or receive this notification on VHF (72) will not constitute grounds for granting redress. This changes RRS 62.1 (a).

9.3 The leeward gate will be set approximately 0.1 nautical miles to windward of the starting line. If the gate is replaced by a single mark, it shall be left to port. The gate may be laid or adjusted after the starting signal.



10. MARKS

<u>Mark</u>	<u>Description</u>	<u>Mark</u>	<u>Description</u>
Start	Red tetrahedron	Gate	orange tetrahedron (2)
Windward	yellow tetrahedron	Windward Change	yellow tetrahedron
Offset	small orange tetrahedron	Finish	yellow tetrahedron

11. THE START

- 11.1** The RC signal boat will display flag L with one sound signal as it departs the harbor.
- 11.2** Races will be started using RRS 26.
- 11.3** The starting line will be between a staff displaying an orange flag on the signal boat and either a nearby inflatable mark or a staff displaying an orange flag on a nearby RC boat.
- 11.4** Individual recalls and boats disqualified under RRS 30.3 will be broadcast on VHF (72) using sail numbers. This is in addition to and changes RRS 29.1 and 30.3. The failure to hail, the hail of some but not all boats, or the untimely hail of a boat or boats shall not be grounds for granting redress. This changes RRS 62.1 (a).
- 11.5** The RC will broadcast twice on VHF (72) the sail numbers of all boats observed to be OCS at the start; it will not alter the list based on a boat's actions subsequent to the start.
- 11.6** As a courtesy, the sail numbers of the boats scored OCS or BFD may be posted at the weather mark on a white board by a RC boat.
- 11.7** A boat starting later than 5 minutes after her starting signal will be scored Did Not Start (DNS) without a hearing. This changes RRS A4 and A5.

12. CHANGE OF THE NEXT LEG OF THE COURSE

To change the next leg of the course, the RC will lay a new mark (or move the finishing line) and remove the original mark as soon as practicable. When in a subsequent change a new mark is replaced, it will be replaced by an original mark.

13. THE FINISH

- 13.1** The finishing line will be between a staff displaying an orange flag on the finishing line boat and either a nearby inflatable mark or a staff displaying an orange flag on a nearby RC boat.
- 13.2** For course 4 (downwind finish) the finish line will be located to leeward of the leeward gate position. The leeward gate is not a mark of the course for the last leg.
- 13.3** For course 5 (upwind finish) the finish line will be located to windward of the windward mark position. The windward marks are not marks of the course for the last leg.
- 13.4** The gate marks and/or windward marks may be removed before boats finish.
- 13.5** Flag Second Substitute displayed (no sound signal) by the RC finish boat while boats are finishing indicates that another race will be sailed. This changes RRS Race Signals.



14. TIME LIMITS

- 14.1** The time limit for the first boat to reach the first mark is 45 minutes.
- 14.2** The time limit for the first boat to finish the race is 150 minutes (two and one half hours).
- 14.3** Boats failing to finish within 30 minutes of the first boat to finish will be scored Time Limit Expired (TLE) without a hearing. A TLE score will be two more points than the number of boats that have finished within the time limit. This changes RRS 35, A4.1, A4.2, A5, and A11.

15. PENALTY SYSTEM

- 15.1** A boat that has taken a penalty or retired under rule 44.1 shall complete and submit an acknowledgment form available at the protest committee desk within the protest time limit.
- 15.2** A boat that may have broken a rule of Part 2 or RRS 31 while racing may take a post race penalty. The details of this are in SI Attachment A. All boats that have taken a scoring penalty shall submit a written declaration prior to the start of the protest hearing. This changes Part 5, Section B of the RRS.

16. PROTESTS AND REQUESTS FOR REDRESS

- 16.1** Protest forms are available at the protest committee office. Protests shall be delivered there within the protest time limit.
- 16.2** As the RC signal boat docks the RC will display flag B with one sound ashore (see SI 4.3) and post the time limit on the official notice board. The protest time limit is 60 minutes after the display of this signal. A protest time limit of 30 minutes applies to protests and requests for redress by the RC and protest committee about incidents they observe in the racing area. This changes RRS 61.3 and 62.2.
- 16.3** Notices will be posted no later than 30 minutes after the protest time limit to inform competitors of hearings in which they are parties or named as witnesses. Hearings will be held in the protest committee room, located at the RYC office (located in a house on the east side of the property). Protests referred to the protest committee from the arbitrators will be added to the list of scheduled protests as they become available from arbitration.
- 16.4** Notices of protest by the RC or protest committee will be posted to inform boats under RRS 61.1(b).
- 16.5** Breaches of SI 6, 8, 15, 18, 19, 20, 21, 22, 23, 24, 25, 27, 28, and NOR 2, 7, 13, 16, 19 will not be grounds for a protest by a boat. This changes RRS 60.1 (a). Penalties for these breaches and for class rule breaches may be less than disqualification if the protest committee so decides. The scoring abbreviation for a discretionary penalty imposed under this SI will be DPI.
- 16.6** If the RC posts a list of boats scored OCS, ZFP, or BFD on the official notice board before the protest time limit, a request for redress based on such a posted score shall be made no later than one hour after the protest time limit. This changes RRS 62.2.
- 16.7** On the last scheduled day of racing a request for reopening a hearing shall be delivered: (a) within the protest time limit if the party requesting reopening was informed of the decision on the previous day or (b) no later than 30 minutes after the party requesting reopening was informed of the decision that day. This changes RRS 66.
- 16.8** On the last scheduled day of racing a request for redress based on a protest committee decision shall be delivered no later than 30 minutes after the decision was posted. This changes RRS 62.2.



16.9 An arbitration system will be in operation for alleged breach of rules of RRS Part 2 or RRS 31. The details of arbitration are in SI Attachment A. This changes Part 5, Section B of the RRS.

17. SCORING

17.1 The Low Point scoring system RRS Appendix A will be used, however Appendix A2 is changed as follows:

- (a)** When fewer than six (6) races have been completed, a boat's series score will be the total of her race scores.
- (b)** When from six (6) to nine (9) races have been completed, a boat's series score will be the total of her races scores excluding her worst score.
- (c)** When ten (10) races have been completed, a boat's series score will be the total of her race scores excluding her two worst scores.

17.2 Four (4) races are required to be completed to constitute a series.

18. SAFETY

It is the responsibility of the skipper of each boat to assure the proper equipment is on board and that the boat is handled in a safe manner.

19. REPLACEMENT OF CREW OR EQUIPMENT

19.1 Substitution of competitors will not be allowed without prior written approval of the Race Committee.

19.2 Substitution of damaged or lost equipment will not be allowed unless authorized by the Race Committee. Requests for substitution shall be made at the first reasonable opportunity.

20. EQUIPMENT AND MEASUREMENT CHECKS

A boat or equipment may be inspected at any time for compliance with the class rules. On the water, a boat can be instructed by a race committee equipment inspector or measurer to proceed immediately to a designated area for inspection.

21. ADVERTISING

21.1 A boat and her crew shall comply with ISAF Regulation 20, Advertising Code.

21.2 Boats may be required to display identification numbers and sponsors advertising for the duration of the event in accordance with ISAF Regulation 20.4. These items will be supplied free of charge by the organizing authority (OA) at registration.

22. TRASH DISPOSAL

Boats shall not put trash in the water.

23 HAUL-OUT & DEHUMIDIFIER RESTRICTIONS

23.1 Boats shall be afloat by 18:00 on Thursday, August 7 and shall not be hauled out during the regatta except with and according to the terms of prior written permission of Race Committee.

23.2 Dehumidifiers shall not be used in boats after 18:00 on Thursday, August 7.



24. DIVING EQUIPMENT AND PLASTIC POOLS

Underwater breathing apparatus and plastic pools or their equivalent shall not be used around boats between the preparatory signal of the first race and the end of the regatta.

25. RADIO COMMUNICATION

- 25.1** Except in an emergency, a boat shall neither make radio transmissions while racing nor receive radio communications not available to all boats. This restriction also applies to mobile telephones.
- 25.2** The RC will use VHF radio, Channel 72, to communicate to the fleet, including the location of the starting area, countdown to the start, OCS bow/sail numbers, General Recalls and Postponements. Failure to make these broadcasts or failure to include a bow#/sail# or failure to hear them shall not be grounds for granting redress. This changes RRS 62.1.

26. PRIZES

Prizes will be awarded to the skipper and crew of the first five boats in the series.

27. DISCLAIMER OF LIABILITY

- 27.1** Competitors participate in the regatta entirely at their own risk. See rule 4, Decision to Race. The organizing authority will not accept any liability for material damage or personal injury or death sustained in conjunction with or prior to, during, or after the regatta.
- 27.2** All competitors will also be required to sign a Competitors Liability Waiver form during registration.

28. INSURANCE

Each participating boat shall be insured with valid third-party liability insurance with a minimum coverage of \$1000 000, and it is the owner or owner's/representative's sole and inescapable responsibility to ensure that the insurance is in place and is adequate prior to participating in this event. The Organizing Authority may ask for a copy of your insurance binder.



ATTACHMENT A - US Sailing Prescriptions

The following US SAILING prescriptions to rules 61.4, 67, 76.1 and Appendix T, Sections A, B and D, shall apply.

A1. Add rule 61.4:

“US Sailing prescribes that no fees shall be charged for protests or requests for redress.”

A2. After rule 67 add:

“US Sailing prescribes that:

(a) A boat that retires from a race or accepts a penalty does not, by that action alone, admit liability for damages.

(b) A protest committee shall find fact and make decisions only in compliance with the rules. No protest committee or US SAILING appeal authority shall adjudicate any claim for damages. Such a claim is subject to the jurisdiction of the courts.

(c) A basic purpose of the rules is to prevent contact between boats. By participating in an event governed by the rules, a boat agrees that responsibility for damages arising from any breach of the rules shall be based on fault as determined by the application of the rules, and that she shall not be governed by the legal doctrine of ‘assumption of risk’ for monetary damages resulting from contact with other boats.”

A3. After rule 76.1 add:

“US Sailing prescribes that an organizing authority or race committee shall not reject or cancel the entry of a boat or exclude a competitor eligible under the notice of race and sailing instructions for an arbitrary or capricious reason or for reason of race, color, religion, national origin, gender, sexual orientation, or age.”

A4. Add Appendix T, Sections A, B and D :

SECTION A PENALTIES WHILE RACING

T1 PENALTIES AT THE TIME OF THE INCIDENT

The first two sentences of rule 44.1 are changed to: ‘A boat may take a One-Turn Penalty when she may have broken a rule of Part 2 or rule 31 while *racing*. However, when she may have broken a rule of Part 2 while in the *zone* around a *mark* other than a starting *mark*, her penalty shall be a Two-Turns Penalty.’

SECTION B POST-RACE PENALTIES

T2 PENALTIES TAKEN AFTER A RACE

T2.1 After a race, a boat that may have broken a rule of Part 2 or rule 31 while *racing* may take a Post-Race Penalty for that incident. The penalty shall be a Scoring Penalty, calculated as stated in rule 44.3(c). However, rules 44.1(a) and (b) apply. A boat takes a Post-Race Penalty by informing



the race committee in writing and identifying the race number and when and where the incident occurred.

- T2.2 The Post-Race Penalty shall be
- (a) 20%, if taken before the protest time limit, or
 - (b) 30%, if taken after the protest time limit but before the beginning of a hearing involving the incident.

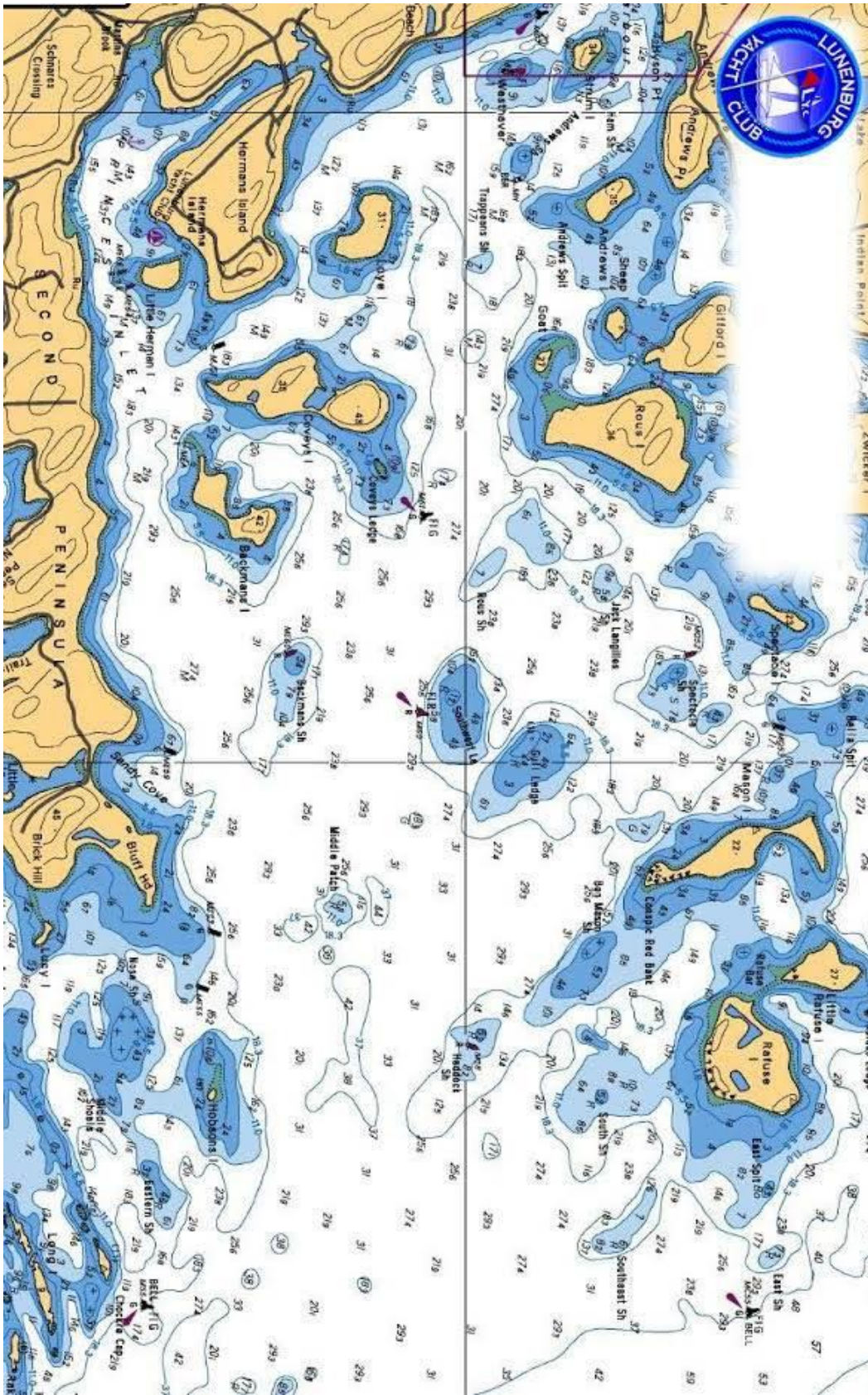
SECTION D ARBITRATION

A boat may take the applicable Post-Race Penalty in Section B without participating in an arbitration meeting.

T5 PROTEST ARBITRATION

- T5.1 An arbitration meeting will be held prior to a protest hearing for each incident resulting in a *protest* by a boat involving a rule of Part 2 or rule 31, but only if each *party* is represented by a person who was on board at the time of the incident. No witnesses will be permitted. However, if the arbitrator decides that rule 44.1(b) may apply or that arbitration is not appropriate, the meeting will not be held, and if a meeting is in progress, that it will be closed.
- T5.2 Based on the evidence given by the representatives, the arbitrator will offer an opinion as to what the protest committee is likely to decide:
- (a) the *protest* is invalid,
 - (b) no boat will be penalized for breaking a rule, or
 - (c) one or more boats will be penalized for breaking a rule, identifying the boats and the penalties.
- T5.3 A boat that may have broken a rule may take a Post-Race Penalty as provided in Section B. However, the penalty in rule T2.2(a) is available only until the protest time limit or until the beginning of the arbitration meeting, whichever is earlier. During a meeting, a boat may take a penalty by acknowledging her acceptance of the penalty in writing.
- T5.4 If a boat asks to withdraw her *protest*, the arbitrator may act on behalf of the protest committee in accordance with rule 63.1 to accept the withdrawal.





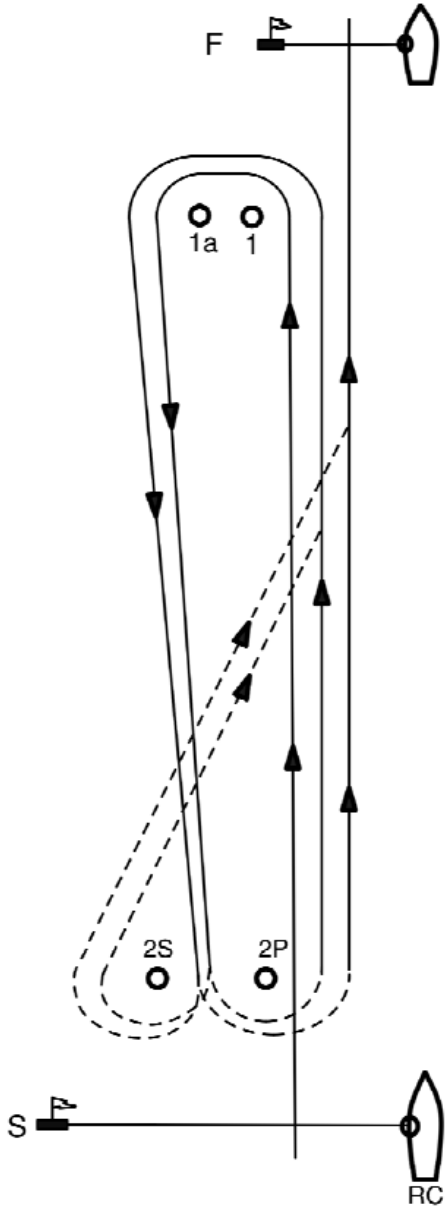
ALEXANDER KEITH'S



Illustration A – Courses

Course 5

START - 1 - 1a - 2S/2P - 1 - 1a - 2S/2P - FINISH



Course 4

START - 1 - 1a - 2S/2P - 1 - 1a - FINISH

